

Savvy 4130



Advance Dynamic Alternating Mattress

The **Savvy 4130** 19 air cells dynamic mattress overlay system provides effective therapy with reliable high quality TPU coated nylon air cells for pressure ulcer prevention.

The 4" height 19 air cells mattress overlay with our digital pumps is ideal for patients at **medium to high risk** of pressure ulcer development.



The **Savvy 4130** features 19 dynamic alternating air cells with 2-1 TrueCare alternating and 3 static head cells and is designed to be used on an existing mattress to improve pressure reduction on the support surface.

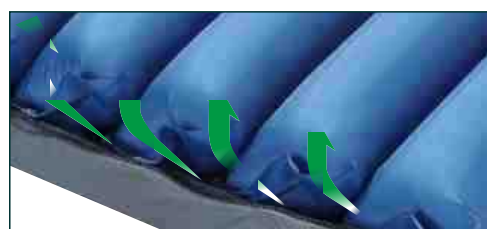


The **Savvy 4130** is an advanced multi-functional microcontroller programmed **7.0L linear compressor digital pump** dynamic mattress overlay system. The digital pump has a precise **digital pressure transducer** which is able to reduce the power wattage once the pressure is reached therefore it is the most quiet, power efficiency, and extended lifetime pump. The digital pump has 20 minutes **static mode**, **alternate mode with selectable cycle time**, **auto-firm mode**, and **auto-detection mode**. To insure patient's safety, the pump has **audiovisual** low pressure, power failure, and service alarms **with error code**.



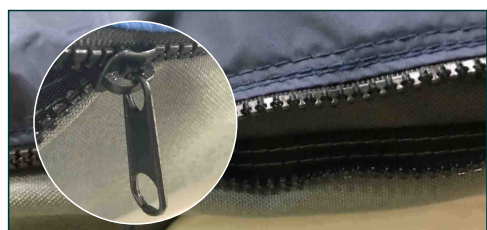
AKTC TrueCare Alternating

TrueCare Alternating will give patient the best sleep without the disturbance. The support surface can maintain the same height during each alternating cycle hence enhances the comfort for the patient. The patient will never experience motion sickness with our TrueCare air mattress system.



AKTC independent Low Air Loss (iLAL)

iLAL effectively reduces the moisture and skin heat on the support surface by periodically providing a high volume of low air loss relief. Low air loss is ventilated through 30 of 1.5 mm diameters holes on the manifold and releases up to 70L per cycle. More effective and longer lifetime than on-cell laser holes.



Medical Grade Two-Way Stretch PU Cover



Medical grade vapor permeable and spill resistance with fire retardant cover keeps the moisture away from patient's skin. Two high quality molded-tooth zippers cover for easy replacement and laundry. The cover is washable to 95° Celsius.



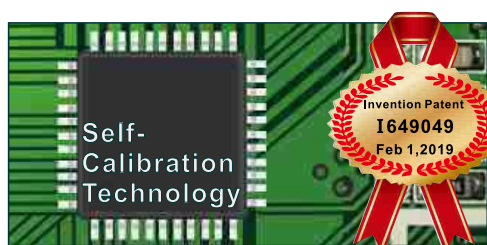
Knitted Retainer

The retainer is built with strong high quality knitted material to ensure the air cells are placed firmly. The knitted retainer is easy to be detached for washing and replacing.



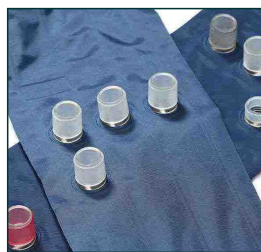
Dual-Way "Quick CPR"

Immediate mattress deflation in case of emergency and immediate mattress inflation with our optional handheld inflator for quick setup



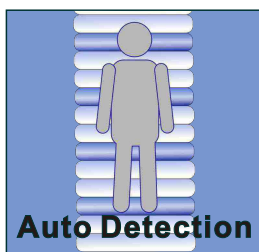
SelfCalibration Technology

The same precise pressure and softness air mattress regardless of the altitude whether is up on the mountain or down in the valley; of the temperature whether is in the winter or the summer; of the day whether is daytime or nighttime.



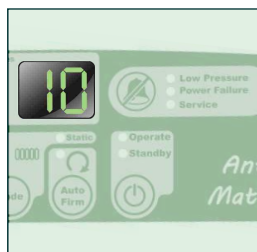
Convenient Quick Couplings (CQC) with Fabrics Manifold

CQC connector design eases air cell replacement without any tool. Fabrics manifold design prevents kink during transportation.



Auto Detection

Auto Pressure Detection
Auto pressure detection providing the recommendation pressure setting based on patient's body size.



Audiovisual Alarms

Power failure, low pressure, and service alarm with error code to ensure the nursing staff is notified in the event of faults.



Transportation Mode

The transportation cap can be used in case of patient transportation or power outage.

Savvy 4130

| Pump | Digital |
|-----------------------------|--|
| Dimension (cm) | 30x10x20 |
| Supply Voltage | 230V/50Hz |
| Alternating Type | 2-1 TrueCare Alternating |
| Flowrate (Liter)* | 7.0 |
| Control Panel Type | Digital Keypad+Seven-Segments LED display |
| Mode | Alternate, Static |
| Full Cycle Time (Minutes) | Selectable 10, 15, 25, 30 |
| Alarms | Audiovisual Alarms (Power Failure, Low Pressure, and Service Alarm with Error Code) |
| Auto Pressure Detection | Yes |
| Power Code Type | Non-detachable |
| Classification | Class II, Type BF |
| Electrical Safety Standards | IEC60601-1 IEC60601-1-2 |
| Warranty | 1 year |

| Mattress | 4" Mattress Overlay |
|------------------------------------|---------------------------|
| Dimension (cm) | 200x85x10 |
| Number of Cells | 19 |
| Cell Material | Nylon-TPU (Ether) |
| Top Cover Material | Two-Way Stretch Polyester |
| Pillow Section | Yes, 3 cells |
| independent Low Air Loss (iLAL) | Yes (up to 70L per cycle) |
| CPR Type | AKTC Q-CPR |
| Recommendation Maximum Weight (kg) | 135 |
| Warranty | 1 year |

*The flow rate may be varied due to fluctuation of input voltage.



Air Kinetic Technologies Corp.

No.3, Gongye 5th Rd., Pingzhen Dist, Taoyuan City 324, Taiwan

TEL: +886-3-419-4567 FAX: +886-3-469-3789 E-MAIL: service@aktc.com.tw

www.aktc.com.tw

